

## 目录 CONTENTS

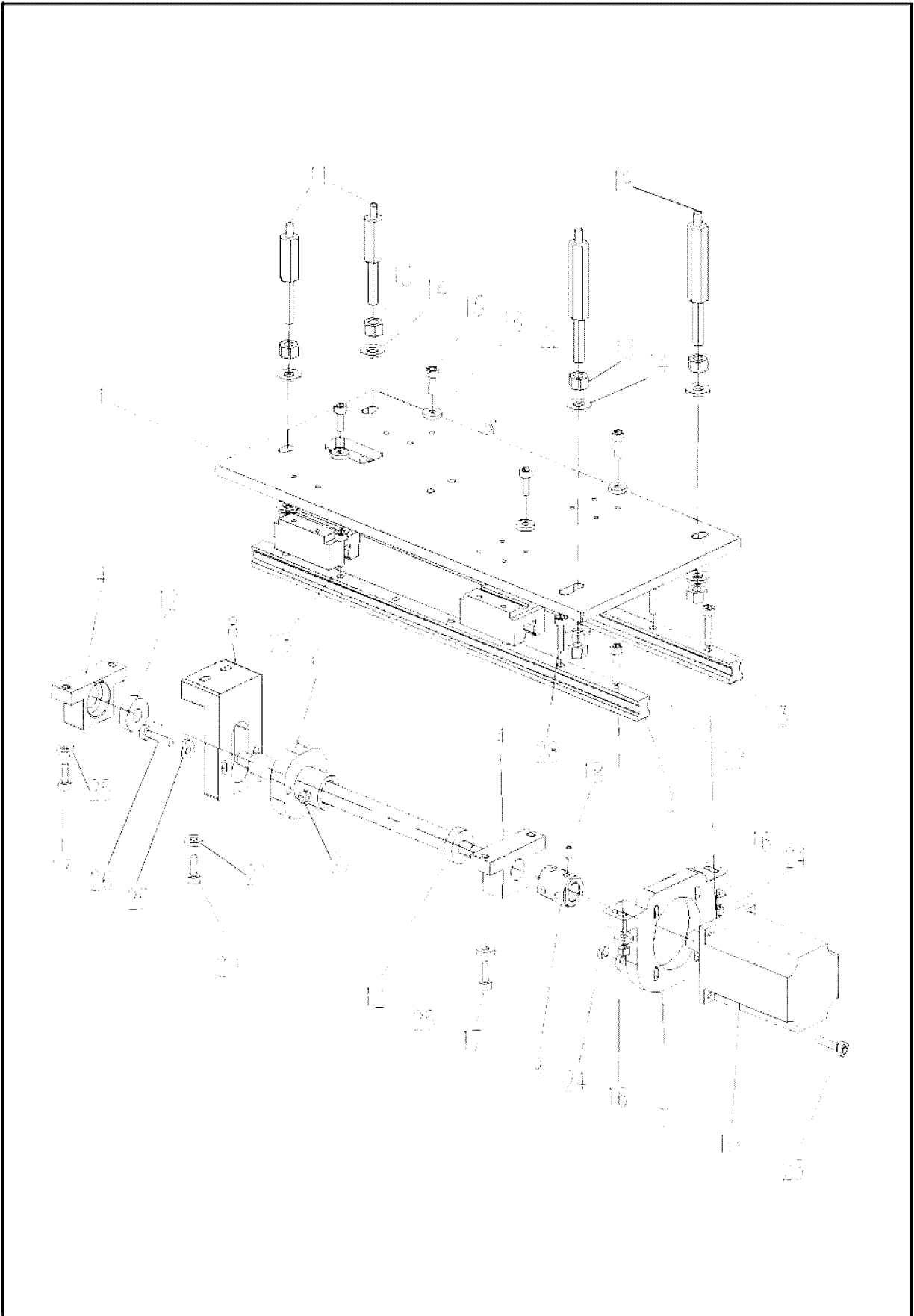
一、	机架台板 / TABLE FRAME.....	1
二、	传动机构 / TRANSMISSION MECHANISM.....	4
三、	压脚机构/ PRESSER FOOT MECHANISM.....	6
四、	中刀机构 / CENTER KNIFE SYSTEM.....	8
五、	堆叠器 / STACKER.....	11
六、	激光定位灯/ LASER PARTS.....	13
七、	机头部件 / SEWING MECHINE HEAD.....	15
八、	盖板组件 / COVER CONNECTION PARTS.....	17
九、	电机同步带组件/ MOTOR DRIVER PARTS.....	19
十、	辅助对布装置 /ASSIST EQUIPMENT PARTS .....	21
十一、	堆叠器组件 / STACKER PARTS.....	23
十二、	电控箱 / CONTROL BOX.....	25
十三、	对条对格部件 ( 选购件 )GRID&STRIP(OPTIONAL) .....	27



一、机架台板/TABLE FRAME

序号 NO.	件号 SAP CODE	名称	NAME OF PARTS	用量 QTY
1	301461	机架组件(喷漆)	Framework unit	1
2	40731001	脚垫	Food pad	4
3-1	40730001	气枪	Air gun	1
3-2	40730010	螺旋气管	Coil tube	1.5M
3-3	40736022	气管接头APG6	Tube joints APG6	1
3-4	40736021	8气管接头APC8-02	Tube joints APC8-02	1
4	40711001	抽屉	Drawer	1
5	40730004	电源开关	Power switch	1
6	40730072	脚踏开关	Foot switch	1
7	40730005	传感器	Sensor	3
8-1	40732359	缓冲垫块	Right limiting rubber stoper	2
8-2	W01021	大垫片M6	Washer M6	2
8-3	N01012	螺母M6	Nut M6	4
8-4		螺柱M6x45		2
9	40736046	吹气接头(一转六)	Tube joints	1
10-1	40730113	电控箱	Electric box	1
10-2	S05072	螺钉M6x30	Screw M6X30	2
10-3	W01021	大垫片M6	Washer M6	2
10-4	40122014	减震垫	Washer	2
10-5	407N01003	自锁螺母M6	Nut M6	2
11-1	40730045	气压阀	Filter regulator asm.	1
11-2	40730047	6一出二接头	Tube joints	1
11-3	40730103	手动阀(VHK3)	Manual valve	1
11-4	S05124	螺栓M5X16	Screw M5X16	2
11-5	W01009	垫圈5	Washer M5	2
11-6	W02001	弹垫5	Washer M5	2
12-1	40728004	消声器	Noise silencer	1
12-2	40736018	螺纹直通APC6-02	Tube joints APC6-02	1
12-3	4073000600	吹气用电磁阀	Blowing electromagnetic valve parts	1
12-4	S05064	螺钉M4X30	Screw M4X30	2
12-5	W01001	垫圈4	Washer M4	2
12-6	W02002	弹垫4	Washer M4	2
13	40732007	滑轮	Roller	4
15-1	40730082	电磁阀	Electromagnetic valve parts	3
15-2	40730085	双通汇流板(4位)	Convergence panel	1
15-3	40730031	电磁阀盖板	Cover plate	1
15-4	40728003	消声器	Noise silencer	4
15-5	40736003	6弯角气管接头(1分螺纹)	Tube joints	1
15-6	61807021	接插件	Connector	4
15-7	S05064	螺钉M4x30	Screw M4X30	3
15-8	W01001	垫圈4	Washer M4X30	4
15-9	407N01002	自锁螺母M4	Nut M4	4
16-1	40730082	电磁阀	Electromagnetic valve parts	3
16-2	40730028	双通汇流板(3位)	Convergence panel	1
16-3	40728003	消声器	Noise silencer	4
16-4	40736003	6弯角气管接头(1分螺纹)	Tube joints	1
16-5	61807021	接插件	Connector	3
16-6	S05064	螺钉M4x30	Screw M4X30	4
16-7	W01001	垫圈4	Washer M4	3
17	4071211100	双刀钢板前	Cutting board	1
18	40732602	盖板二	Cover plate 2	1
19-1	40712110	双刀钢板后	Double knives steel plate	1
19-2	40712112	钢板固定板	Plate	1
20	40732601	盖板一	Cover plate	1

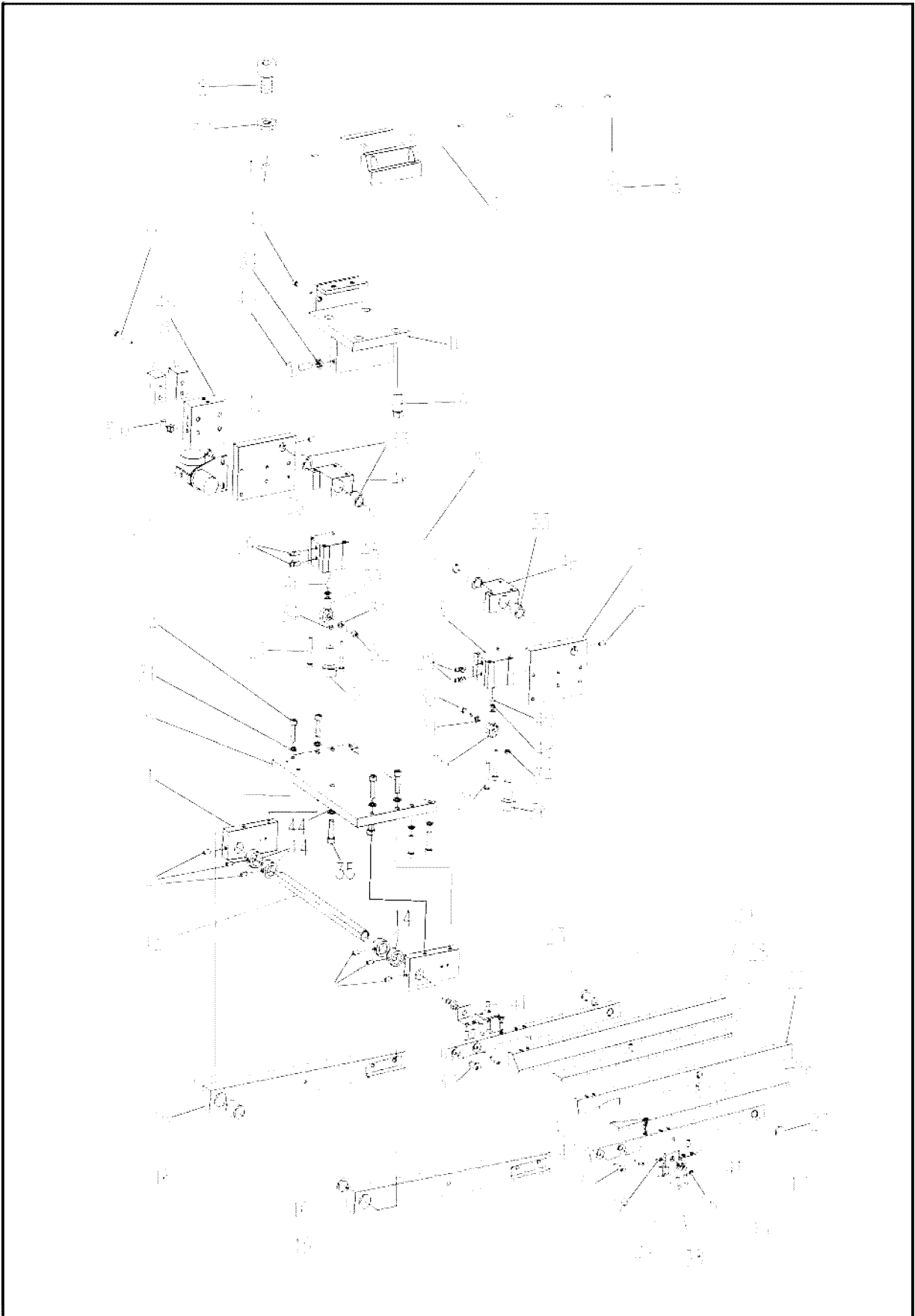
21	40732340	盖板三	Cover plate	1
22	407S04001	十字沉头螺钉M4x16	Countersunk screw M4x16	28
23	40719301	定刀	Fixed knife	11
24	S04042	螺钉M2x5	Countersunk screw M2x5	4
25-1	40736041	吹气铜头	Blowing nipple	6
25-2	40736047	6迷你式气管接头APC6-M5	Tube joints	
26-1	302101	电控箱	Electric cabinet	1
26-2	S05072	螺钉M6X30	Screw M6X30	4
26-3	W01003	垫圈M6	Washer M6	8
26-4	W02004	弹垫M6	Washer M6	4
26-5	407N01003	自锁螺母M6	Nut M6	4
27	4073200800	脚轮支架	Caster wheel	4
29	S05034	内六角螺钉M5x15	Socket head screw M5x15	16
30	40711014	塑料塞	Plastic stopper	7
31-1	400608	双刀定刀板15mm	Double knife plate fixed 15mm	1
31-2	400609	双刀定刀板22mm	Double knife plate fixed 22mm	1
31-3	400610	双刀定刀板28mm	Double knife plate fixed 28mm	1
31-4	400611	双刀定刀板35mm	Double knife plate fixed 36mm	1
31-5	400612	双刀定刀板40mm	Double knife plate fixed 40mm	1
31-6	400613	单刀定刀板	knife plate fixed	1
32	407S04002	螺钉M3X8	Screw M3x8	6
33	40732377	脚轮固定架组件	Roller plate	4
34	40732380	脚轮固定板	Roller plate	4
35	40711005	拖链	Chain	1
36	S05058	螺钉M4X10	Screw M4x10	4
37	L02024	螺钉M12x25	Screw M12x25	8
38	W01016	垫片12	Washer M12	8



<p>二 Group2</p>	<p>传动机构 TRANSMISSION MECHANISM</p>	<p>全自动门襟缝纫机 AUTOMATIC PLACKET SETTING MACHINE</p>
---------------------	--	---

二、传动机构 / TRANSMISSION MECHANISM

序号 NO.	件号 SAP CODE	名称	NAME OF PARTS	用量 QTY
1	400669	机身底板	Bottom action body	1
3	4070930200	导轨组件	Rail action group	2
4	400887	轴承固定架	Bearings fixed plate	2
6	4070930300	丝杠组件	Screwed shaft group	1
7	400888	电机连接架	Motor fixed plate	1
8	400889	连接板	Connection board	1
9	40703301	连轴器	Coupled axle-pin	1
10	40733005	电机	Motor	1
11	40732356	机头连接短螺杆	head connection short screw	2
12	40724301	轴承6000	Bearings	2
13	N01011	M8螺母	Nut M8	8
14	W01010	M8垫片(加厚)	Washer M8	8
15	S05118	内六角螺钉M4x16	Screw M4x16	16
16	W01001	M4垫片	Washer M4	22
17	S05129	内六角螺钉M5x18	Screw M5x18	4
18	S10006	内六角紧固螺钉M5x6	Screw M5x6	4
19	40732357	机头连接长螺杆	head connection long screw	2
20	S05084	内六角螺钉M6x25	Screw M6x25	2
21	W01003	M6垫片	Washer M6	2
22	S05058	内六角螺钉M4x10	Screw M4x10	1
23	S05064	内六角螺钉M4x30	Screw M4x30	6
24	407N01002	M4自锁螺母	Nut M4	6
25	W01009	M5垫片	Washer M5	6
26	S05069	内六角螺钉M5x40	Screw M5x40	2
27	407N01001	M5自锁螺母	Nut M5	2
28	S05062	内六角螺钉M4x20	Screw M4x20	4

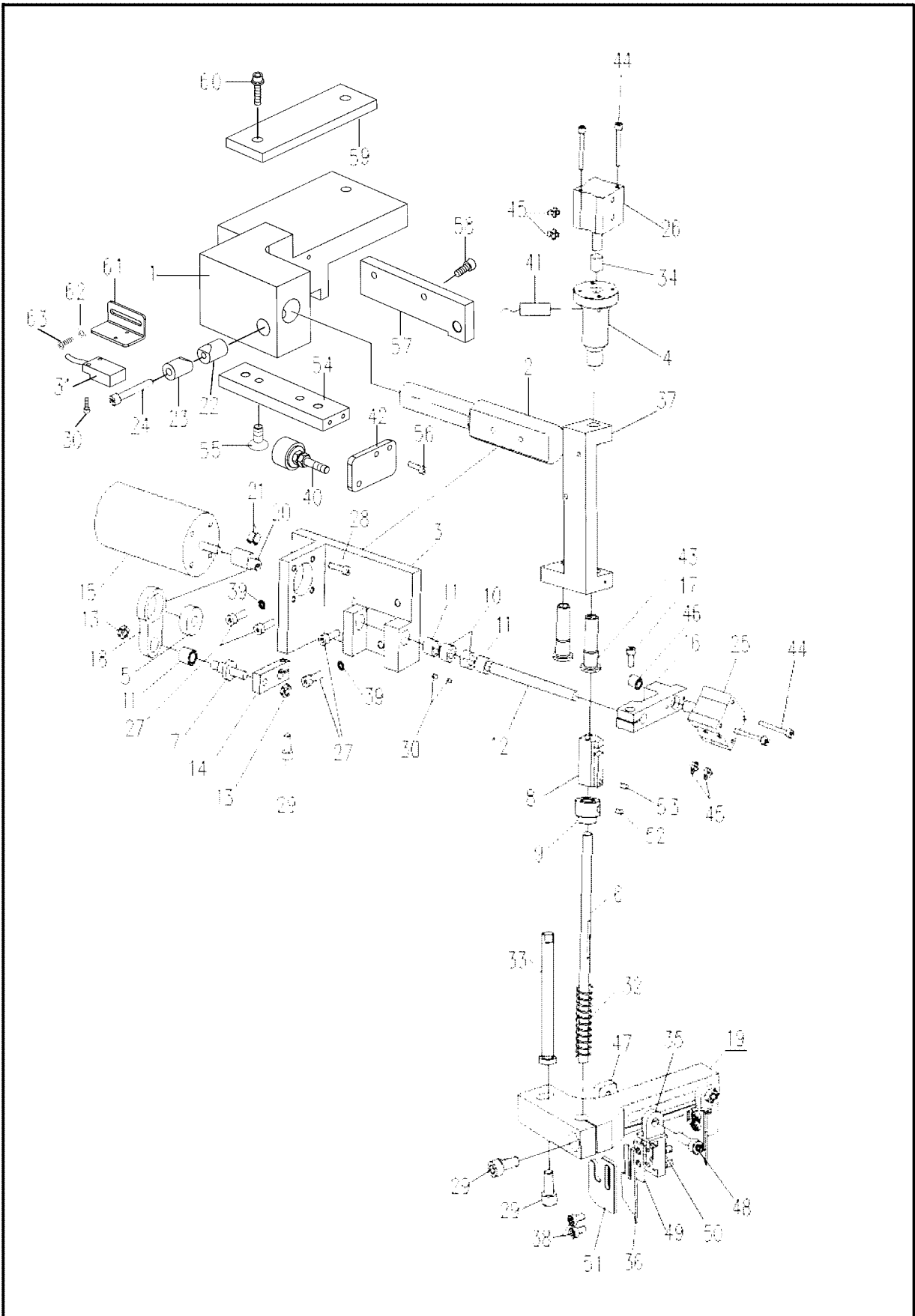


<p>三 Group 3</p>	<p>压脚机构 PRESSER FOOT MECHANISM</p>	<p>全自动门襟缝纫机 AUTOMATIC PLACKET SETTING MACHINE</p>
----------------------	--	---

三、压脚机构/ PRESSER FOOT MECHANISM

序号 NO.	件号 SAP CODE	名称	NAME OF PARTS	用量 QTY
1	400890	底部连接块	Bottom side connection plate	2
2	S10006	沉头内六角紧定螺钉M5x6	Screw M5x6	8
3	400891	顶部连接块	Top side connection plate	2
4	S05129	螺钉M5x18	Screw M5x18	8
5	40703302	上轴	Upper shaft	1
6	400892	固定板	Clamp main plate	1
7	4070930400	电机导轨	Guide rail	1
8	S05076	螺钉M8X40	Screw M8x40	3
9	L02018	螺钉(外六角)M10x20	Screw M10x20	4
10	302089	电机导轨连接块组件	Slipper connection unit	1
11	S05064	螺钉(内六角)M4x30	Screw M4x30	4
12	S05058	螺钉(内六角)M4x10	Screw M4x10	2
13	40702302	下轴	Lower shaft	1
14	40703335	挡圈	Set collar	4
15	400893	气缸连接臂	Cylinder connection arm	2
16	40703312	铜套	Bushing	2
17	400581	夹钳臂	Clamp arm	2
18	40701021	方板	Bracket	2
19	40701020	盖板	Cover plate	2
20	400894	左压柄	Left Clamp	1
21	S04057	螺钉M4x50	Screw M4x50	4
22	400895	右压柄	Right clamp	1
23	407S30005	销	Bolt	2
24	N01011	螺母M8	Nut M8	2
25	407S15001	开槽平头紧定螺钉M8x15	Screw M8x15	2
26	S10008	内六角凹端紧定螺钉M4x6	Screw M4x6	2
27	4073000900	压力调节器	Pressure regulating valve	1
28	40722301	橡皮夹具垫	Mat clamp	2
29	40736009	气管接头Φ4	Gas-type fitting Φ4	4
30	40730065	气缸SDA25x10	Cylinder SDA25x10	2
31	W01009	平垫圈M5	Gasket M5	8
32	S05035	螺钉M5x25	Screw M5x25	2
33	40703004	套筒	Bushing	4
34	N01012	螺母M6	Nut M6	2
35	S05071	螺钉(内六角)M6x20	Screw M6x30	2
36	40722007	橡胶缓冲器	Rybbber bumper	2
37	407S17009	十字沉头螺钉M5x20	Screw M5x20	4
38	407S17006	十字沉头螺钉M4x12	Screw M4x12	8
39	40736042	鱼耳型气缸接头M5	Ball joint M5	2
40	40712307	内六角螺钉M5x25	Screw M5x25	2
41	40727001	弹簧	Spring	2
42	N01015	螺母M4	Nut M4	2
43	S05118	内六角螺钉M4x16	Screw M4x16	2
44	W01003	平垫圈M6	Gasket M6	2
45	40730317	电磁阀组件	Senoit valve	1
46	400896	气缸固定座	Cylinder holder	2
47	62505002	内六角螺钉M5x15	Screw M5x15	1
48	N01017	螺母M5	Nut M5	2
49	40722007	橡胶缓冲器	Rybbber bumper	1
50	40736011	弯角气管接头M5	Joint M5	1
51	W01022	平垫M8	Washer M8	1



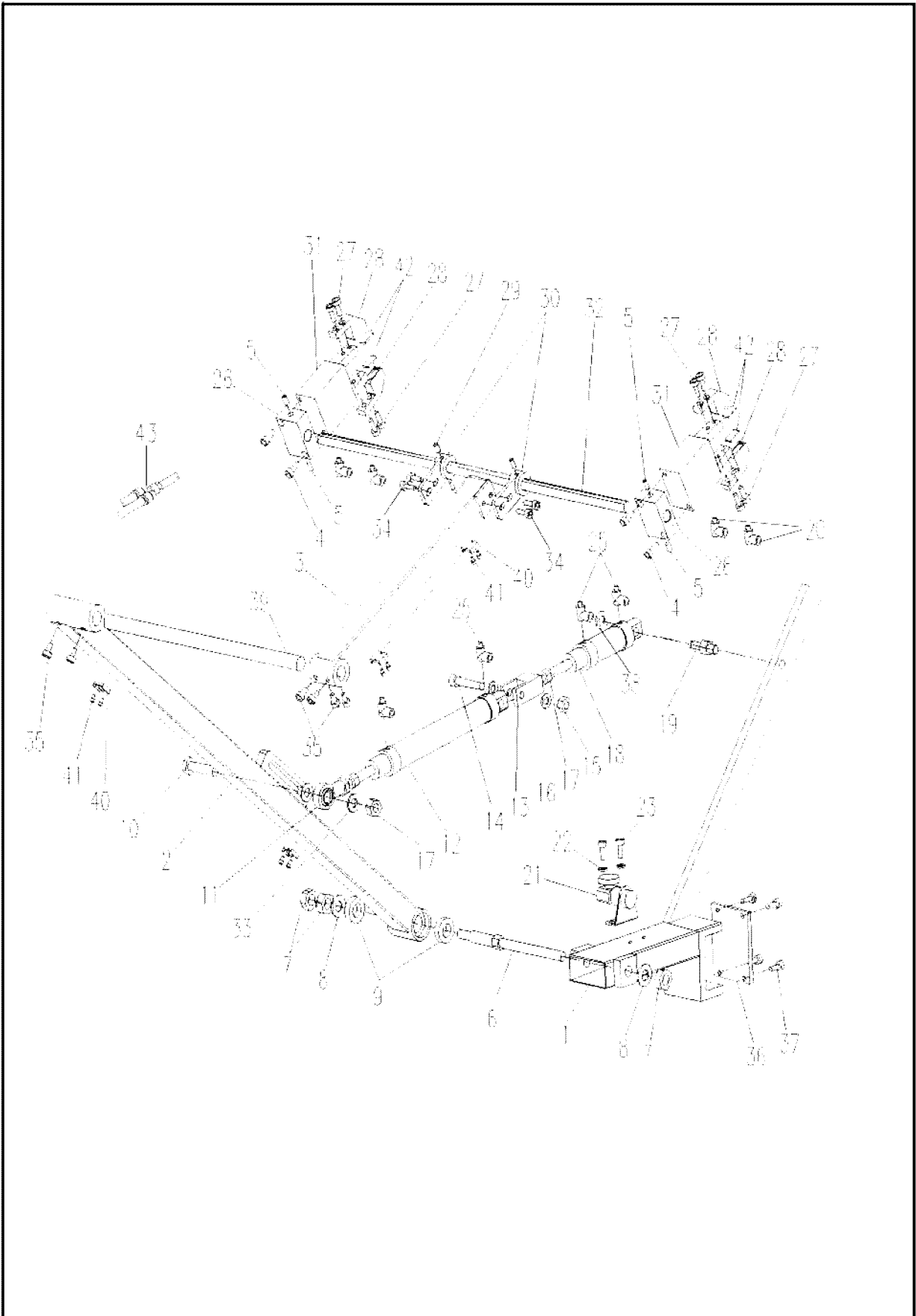


<p>四 Group 4</p>	<p>中刀机构 CENTER KNIFE SYSTEM</p>	<p>全自动门襟缝纫机 AUTOMATIC PLACKET SETTING MACHINE</p>
----------------------	-------------------------------------	---

四、中刀机构 / CENTER KNIFE SYSTEM

序号 NO.	件号 SAP CODE	名称	NAME OF PARTS	用量 QTY
1	40701414	导轨连接块	Guide connection stump	1
2	40701337	螺杆连接块	Body connection screw	1
3	400897	支架	Holder	1
4	40703305	气缸套筒	Bushing	1
5	B03005	滚珠轴承	Ball bearing	1
6	40702309	主轴	Action shaft	1
7	407S30027	螺栓	Screw bolt	1
8	400427	主动器	Actuator	1
9	40703337	弹簧套	Spring set	1
10	40708009	挡圈	Washer	2
11	40703016	套筒	Bushing	3
12	40702017	轴	Shaft	1
13	407N01003	自锁螺母M6	Nut M6	2
14	40705008	杆	Lever	1
15	40733004	中刀电动机	Center knife motor	1
16	400898	前端活塞连接块	Front piston connection plate	1
17	S05087	内六角螺钉M5x12	Screw M5x12	1
18	40705007	连杆	Drive link	1
19	400903	中刀滑块	Center knife stump	1
20	40710002	偏心轮	Eccentric wheel	1
21	S10008	紧定螺钉M4x6	Screw M4x6	2
22	40729308	螺钉座	Fixed screw	1
23	40729307	配合螺钉座	Fixed screw	1
24	S05072	内六角螺钉M6x30	Screw M6x30	1
25	4073004000	气缸SDA12x5d	Cylinder SDA12x5d	1
26	40730039	气缸SDA16x15d	Cylinder SDA16x15d	1
27	S05035	内六角螺钉 M5x25	Screw M5x25	4
28	S05118	内六角螺钉 M4x16	Screw M4x16	4
29	S05124	内六角螺钉 M5x16	Screw M5x16	4
30	S05052	螺钉M3X10	Screw M3x10	2
31	40730073	SP18-05DNA接近开关	SP18-05DNA Sensor	1
32	40727006	弹簧	Spring	1
33	40702312	短轴	Short shaft	1
34	40722007	橡胶套筒	Rubber sleeve	1
35	400904	双刀中刀架	Double knife fixed plate	2
36	40719302	中刀宽刀	Wide center knife	2
37	400899	刀形连接块	Blade connection plate	1
38	S05094	螺钉 M3x8	Screw M3x8	4
39	W02001	弹垫M5	Washer M5	2
40	40732359	限位橡胶块	Limiting stopper rubber	1
41	40730005	接近开关	Sensor	1
42	40712098	防撞板	Anticollision plate	1
43	40703310	套筒	Copper bush	2
44	407S04056	螺钉 M3x40	Screw M3x40	4
45	40736048	接头KJS4-M5	Joint KJS4-M5	4
46	40703015	铜套	Copper bush	1
47	40701402	固定块	Fixed block	2
48	S05063	螺钉M4x25	Screw M4x25	2
49	40701403	挡片	Block slice	2
50	S09042	螺钉M3x4	Screw M3x4	8
51	40712310	中刀导向块	Knife guide block	1
52	S10006	螺钉M5x6	Screw M5x6	1
53	S10009	螺钉M6x8	Screw M6x8	1
54	40701415	导轨连接板	Rail connection plate	1

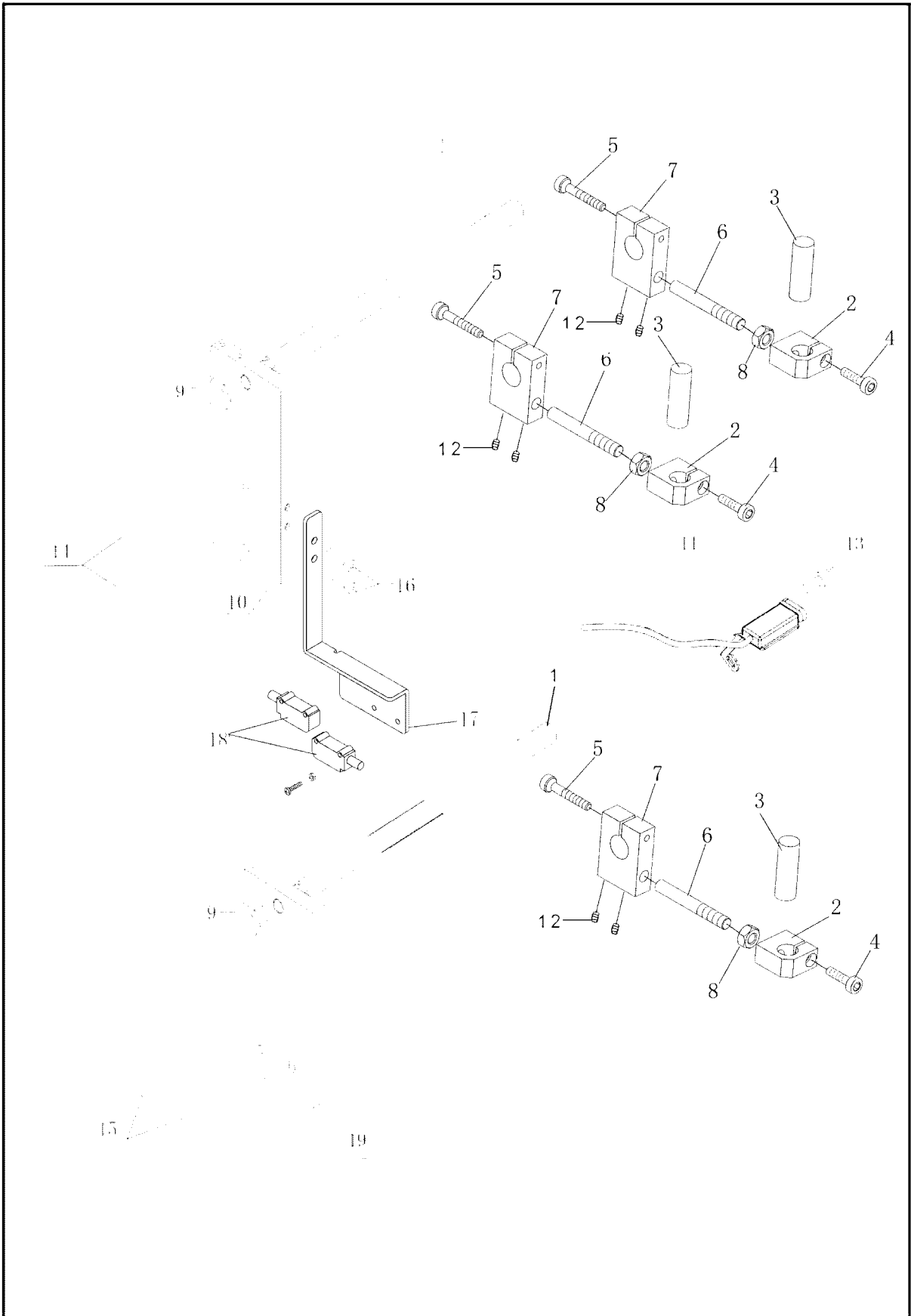
55	S02056	沉头螺钉M6	Screw M6x16	2
56	S05048	螺钉M4X10	Screw M4x10	2
57	40701416	同步带连接块	Belt connecting plate	1
58	S05087	螺钉M5X12	Screw M5x12	2
59	40732513	导轨吊板	Rail hanging plate	1
60	S05060	螺钉M8X25	Screw M8x25	2
61	40712704	感应器安装板	Sensor mounting plate	1
62	W02002	弹垫M4	Washer M4	2
63	S05048	螺钉M4X10	Screw M4x10	2



<p>五 Group 5</p>	<p>堆叠器 STACKER</p>	<p>全自动门襟缝纫机 AUTOMATIC PLACKET SETTING MACHINE</p>
----------------------	------------------------	---

五、堆叠器 / STACKER

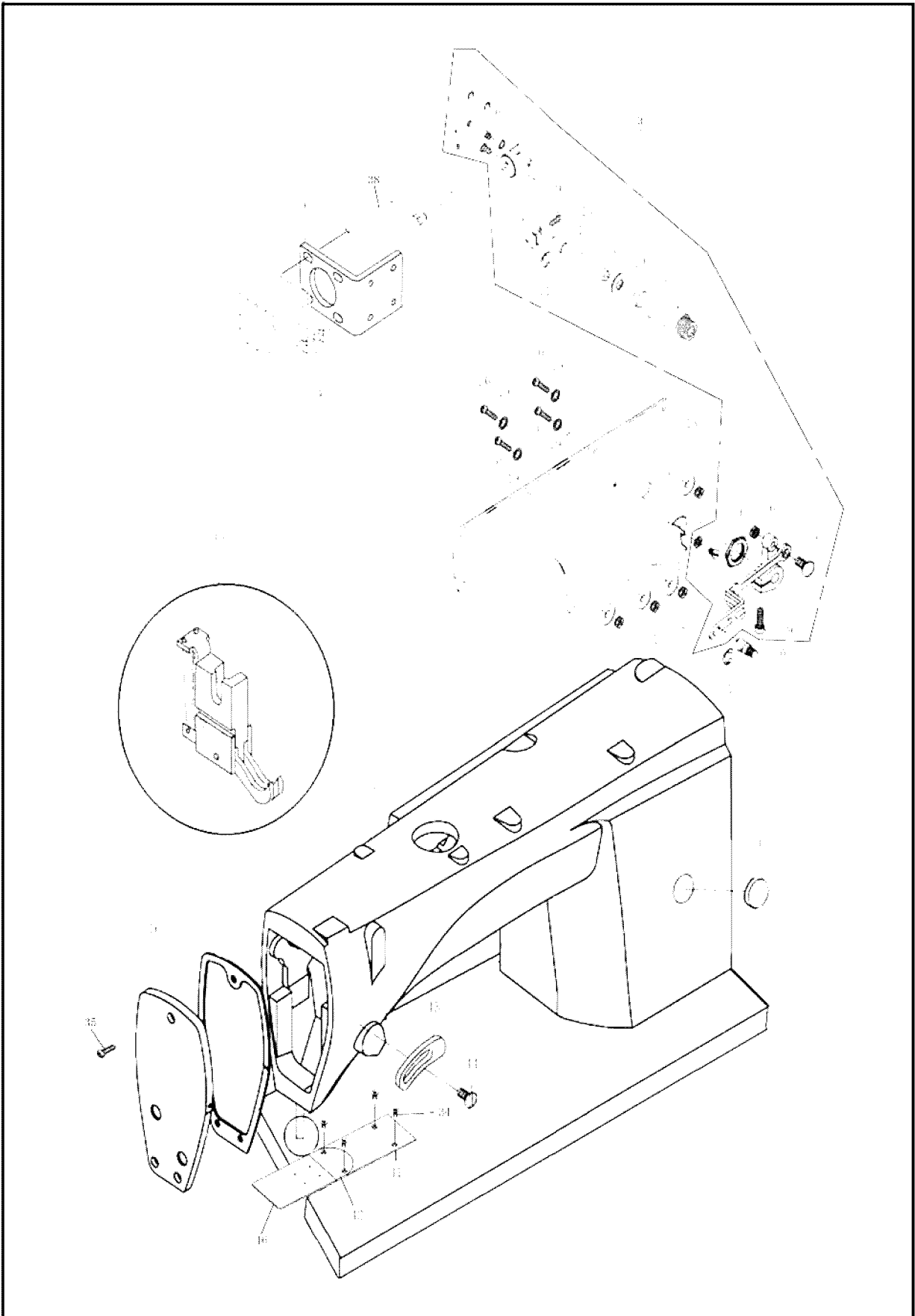
序号 NO.	件号 SAP CODE	名称	NAME OF PATS	用量 QTY
1	4070137300	框架连接体组件	Frame connection board unit	1
2	4070136900	中间支架组件	Center frame unit	1
3	4070136600	顶部支架组件	Top frame unit	1
4	S05071	内六角螺钉M6x20	Screw M6x20	4
5	S09018	内六角平端紧定螺钉M6x18	Screw M6x18	4
6	40729309	框架连接轴	Frame connection shaft	1
7	N01010	螺母M12	Nut M12	3
8	W01016	垫片M12	Washer M12	2
9	40724302	轴承	Bearing	2
10	S05082	外六角螺钉M10x40	Screw M10x40	1
11	40736020	鱼耳型气缸接头M10	Ball joint M10	1
12	40730064	气缸25x125	Cylinder 25x125	1
13	40730322	气缸连接块	Cylinder knives connection plate	1
14	S05076	内六角螺钉M8x40	Screw M8x40	1
15	N01011	螺母M8	Nut M8	1
16	W01010	垫片M8	Washer M8	2
17	N01009	螺母M10	Nut M10	2
18	40730063	气缸25x10	Cylinder 25x10	1
19	407S30037	螺栓	Screw	1
20	42130032	气缸接头	Cylinder joint	1
21	4073000900	压力调节器	Pressure regulating valve	1
22	W01001	垫片M4	Washer M4	2
23	S05058	内六角螺钉M4x10	Screw M4x10	2
25	40736008	气管接头Φ4	Gas-yype fitting Φ4	4
26	40701374	气缸固定座	Cylinder fixed seat	2
27	407S17010	十字沉头螺钉M5x12	Screw M5x12	8
28	40701318	夹臂	Arm	4
29	S09007	内六角平端紧定螺钉M6x6	Screw M6x6	1
30	4070137700	可调支架组件	Adjustable frame parts unit	2
31	40730076	夹布气缸	Cloth clamp cylinder	2
32	40729310	支承杆	Support bar	1
33	W01018	垫片M10	Washer M10	2
34	S05067	内六角螺钉M5x10	Screw M5x10	4
35	S12001	紧定螺钉M6x8	Screw M6x8	6
36	40701370	框架连接板	Frame connection board	1
37	S05124	内六角螺钉M5x16	Screw M5x16	4
38	H03006	φ6卡簧	Circlip φ6	1
39	40729326	连接轴	Connection shaft	1
40	61910005	线夹φ4	Wire clip φ6	4
41	407S17003	十字沉头螺钉M3x4	Screw M3x4	8
42	40701318	橡胶垫	Rubber blanket	2
43	40736029	接头APE4	Joint APE4	2



<p>六 Group 6</p>	<p>激光定位灯 LASER PARTS</p>	<p>全自动门襟缝纫机 AUTOMATIC PLACKET SETTING MACHINE</p>
----------------------	------------------------------	---

六、激光灯定位/LASER PARTS

序号 NO.	件号 SAP CODE	名称	NAME OF PARTS	用量 QTY
1	40702307	顶部激光固定轴	Top laser shaft	2
2	40701126	支架	Holder	3
3	40730020	激光灯	Laser	3
4	S05118	内六角螺钉M4x16	Screw M4x16	3
5	S05063	内六角螺钉M4x25	Screw M4x25	3
6	407S30033	测光支架柄	Holder	3
7	40701041	夹具	Clamp	3
8	N01012	螺母M6	Nut M6	3
9	407S16002	杯状螺母M10	Nut M10	2
10	400900	激光固定板	Laser fixed plate	1
11	1133000900	双开关	Switch	1
12	S10008	内六角紧定螺钉M4x6	Screw M4x6	6
13	S05058	内六角螺钉M4x10	Screw M4x10	1
14	101S11016	一字螺钉(英制)	Screw	2
15	S05118	内六角螺钉M4x16	Screw M4x16	2
16	S05113	内六角螺钉M3x6	Screw M3x6	2
17	40701376	宽度传感器支架	Sensor plate	1
18	40730052	传感器	Sensor	2
19	400905	中刀激光灯固定板	Laser fixed plate	1

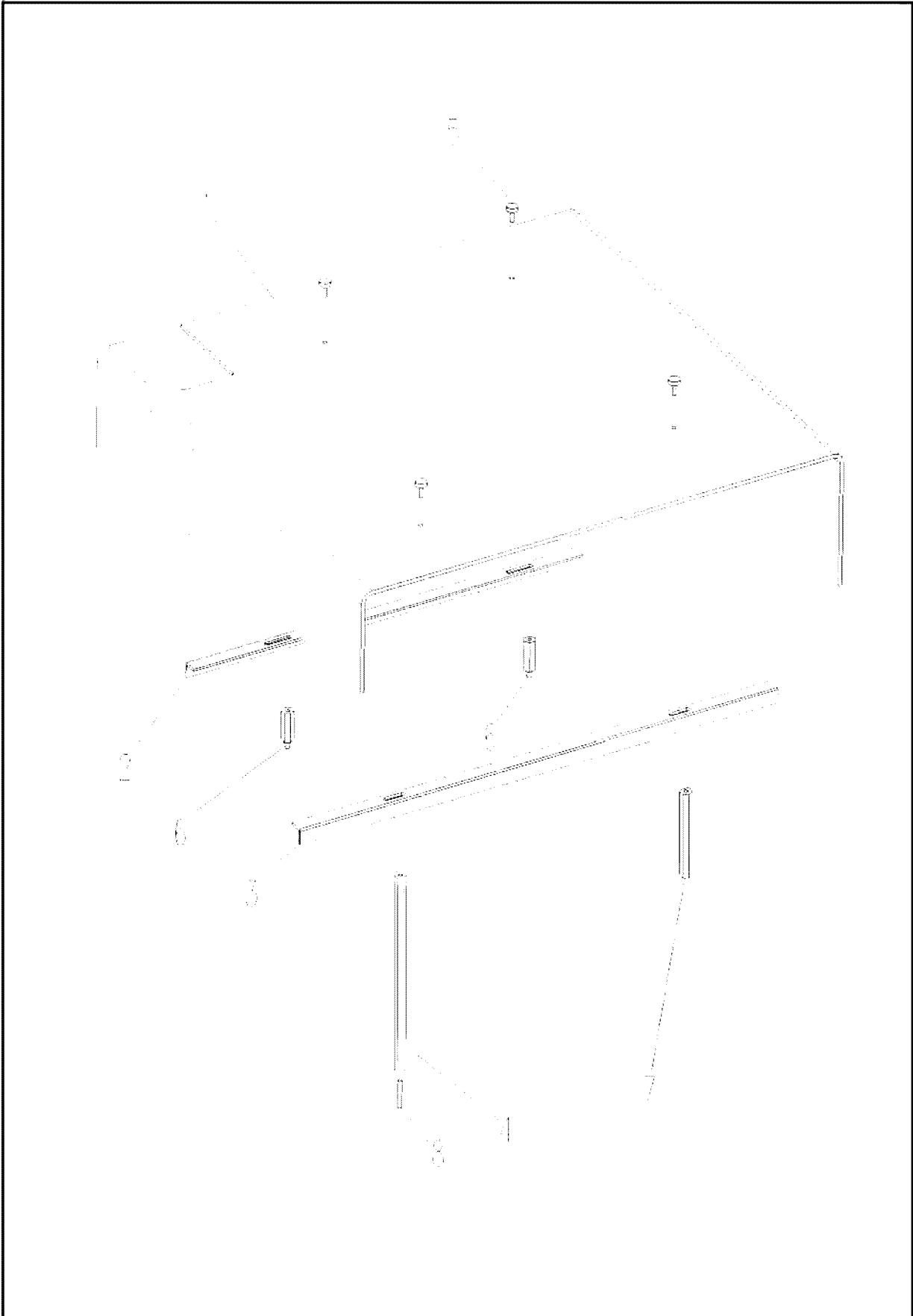


<p>七 Group 7</p>	<p>机头部件 SEWING MACHINE HEAD</p>	<p>全自动门襟缝纫机 AUTOMATIC PLACKET SETTING MACHINE</p>
----------------------	-------------------------------------	---



## 七、机头部件/SEWING MECHINE HEAD

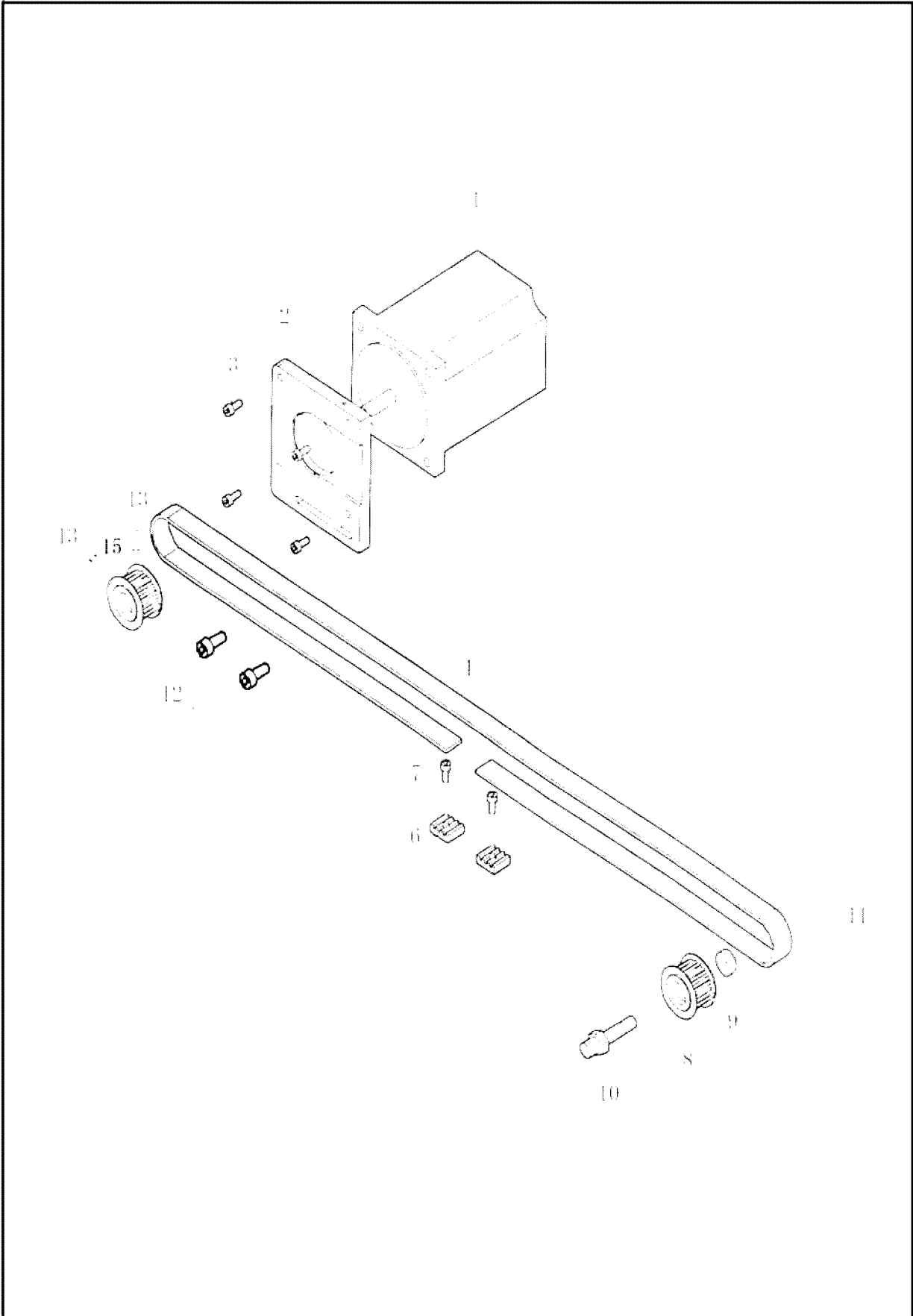
序号 NO.	件号 SAP CODE	名称	NAME OF PARTS	用量 QTY
1	N01015	螺母M4	Nut M4	4
2	W01001	垫片M4	Washer M4	4
3	40701351	自动抬压电磁铁组件	cylinder raise presser unit	1
4	11226007	电磁铁曲柄销	electromagnet crank pin	1
5	H05003	挡圈	Check ring	2
6	11203003	曲柄套筒	Sleeve	1
7	11201003	电磁铁芯轴接头	Adapter	1
8	S05038	接头螺钉	Screw	1
9	11204005	电磁铁曲柄	Electromagnet crank	1
10	S05013	螺钉	Screw	1
11	H5011	挡圈	Check ring	1
12	11202003	自动抬压脚轴	Presser bar lifter shaft	1
13	11228003	套筒垫片	Washer	1
14	11222016	油封	Oil steal	1
15	11203002	套筒	Sleeve	1
16	40701314	机头面板	Face plate	1
17	602061	8991DY-3SS	8991DY-3SS	1
18	300253	后窗板	Rear window plate	1
19	W01001	垫片	Support washer	4
20	S05061	螺钉M4 x16	Screw M4 x16	4
21	40715305	拉杆支架	Tie bar support	1
22	11228002	垫片	Washer	1
23	112S11014	紧固螺钉	Screw	1
24	112S16011	套筒螺钉	Sleeve screw	1
25	112S11012	拉杆螺母	Nut	1
26	11204004	自动抬压脚曲柄	Presser bar lifter sleeve	1
27	11412053	拉杆	Tie bar	1
28	112S20008	拉杆螺钉	Tie bar screw	1
29	S05004	螺钉	Screw	1
30	112S20009	抬压脚拉杆螺钉	Presser bar lifter screw	1
31	H05013	挡圈	Check ring	1
32	40726302	压脚连接杆	Presser foot linkage	1
33	N01012	螺母M6	Nut M6	1
34	407S17014	针板螺钉SM11/64"x40	Screw SM11/64"x40	4
35	101S11001	螺钉	Screw	3
36	40701364	气缸固定板	Fixing plate	1
37	40730008	气缸SDA32x10	Cylinder ADA32x10	1
38	S05073	内六角螺钉M6x40	Screw M6x40	4
39	42130098	节流阀	Connector Φ4	2
40-1	40701346	右固定板	Right fixing plate	1
40-2	40701347	活压脚	Live pressure foot	2
40-3	40701348	活压脚底板	Baseplate	1
40-4	40701321	底座	Lampstand	1
40-5	40701322	左固定板	Left fixing plate	1
40-6	40727302	活压脚弹簧	Spring	2
41	40712332	活动机板	Movable machine plates	1
42	40712333	针板	Needle plate	1
43	400471	断线传感器铜片	Sensor copper sheet	1
44	S05052	内六角螺钉M3x10	Screw M3x10	1
45	10122005	油封	Oil steal	1
46	40712331	推板	Push plate	1



<p>八 Group 8</p>	<p>盖板 COVER CONNECTION PARTS</p>	<p>全自动门襟缝纫机 AUTOMATIC PLACKET SETTING MACHINE</p>
----------------------	--------------------------------------	---

八、盖板组件/COVER CONNECTION PARTS

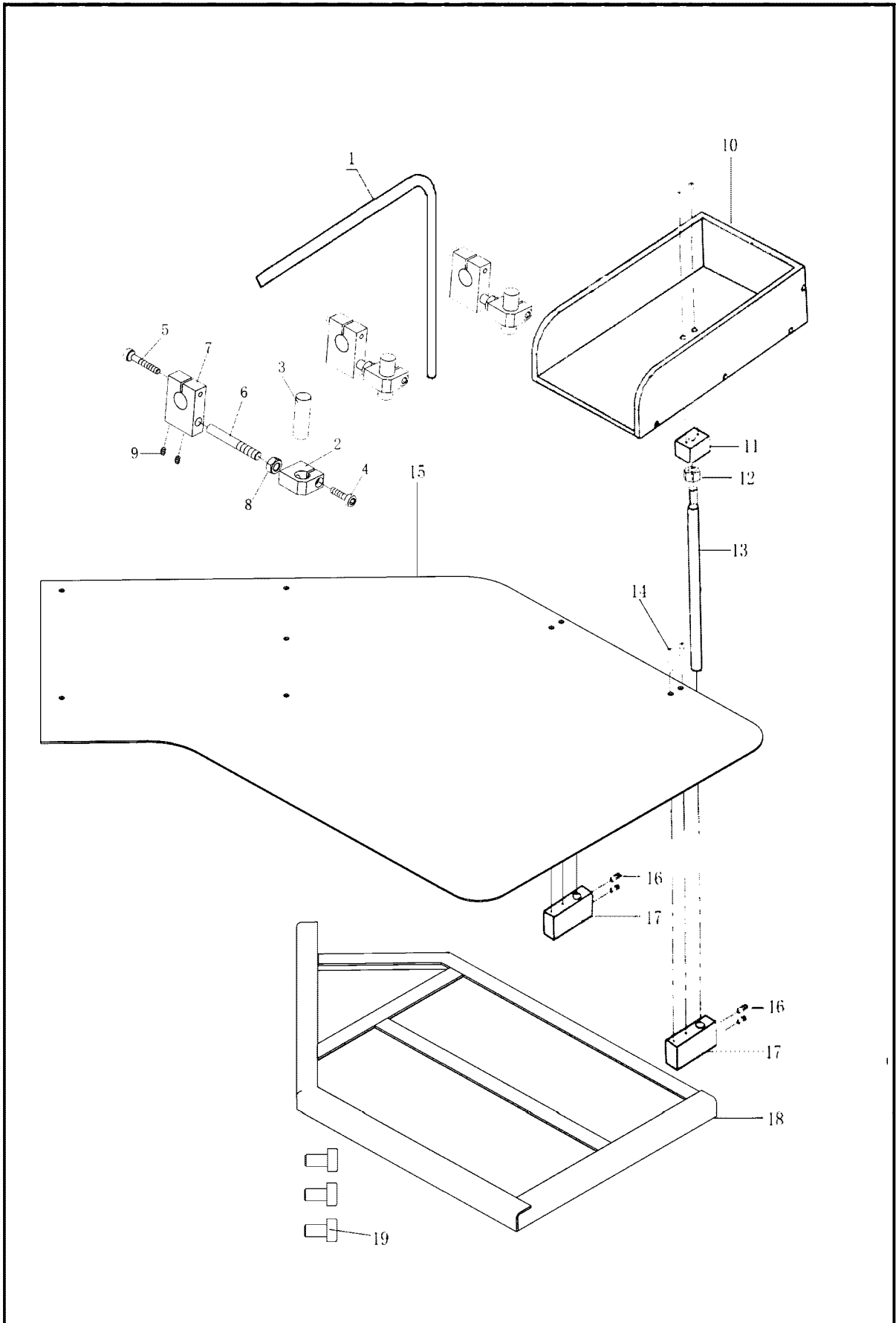
序号 NO.	件号 SAP CODE	名称	NAME OF PARTS	用量 QTY
1	40701323	盖板	Cover	1
2	40712301	右角板	Right andle plate	1
3	40712302	左角板	Left andle plate	1
4	40712304	盖板连接长螺杆	Cover connection long screw	1
5	407S30002	顶部螺钉	Top screw	4
6	40712305	盖板连接前螺杆	Cover connection front screw	2
7	40712306	盖板连接短螺杆	Cover connection short screw	1
8	40712307	螺杆	screw	1



<p>九 Group 9</p>	<p>电机同步带组件 MOTOR DRIVER PARTS</p>	<p>全自动门襟缝纫机 AUTOMATIC PLACKET SETTING MACHINE</p>
----------------------	---------------------------------------	---

九、电机同步带组件/MOTOR DRIVER PARTS

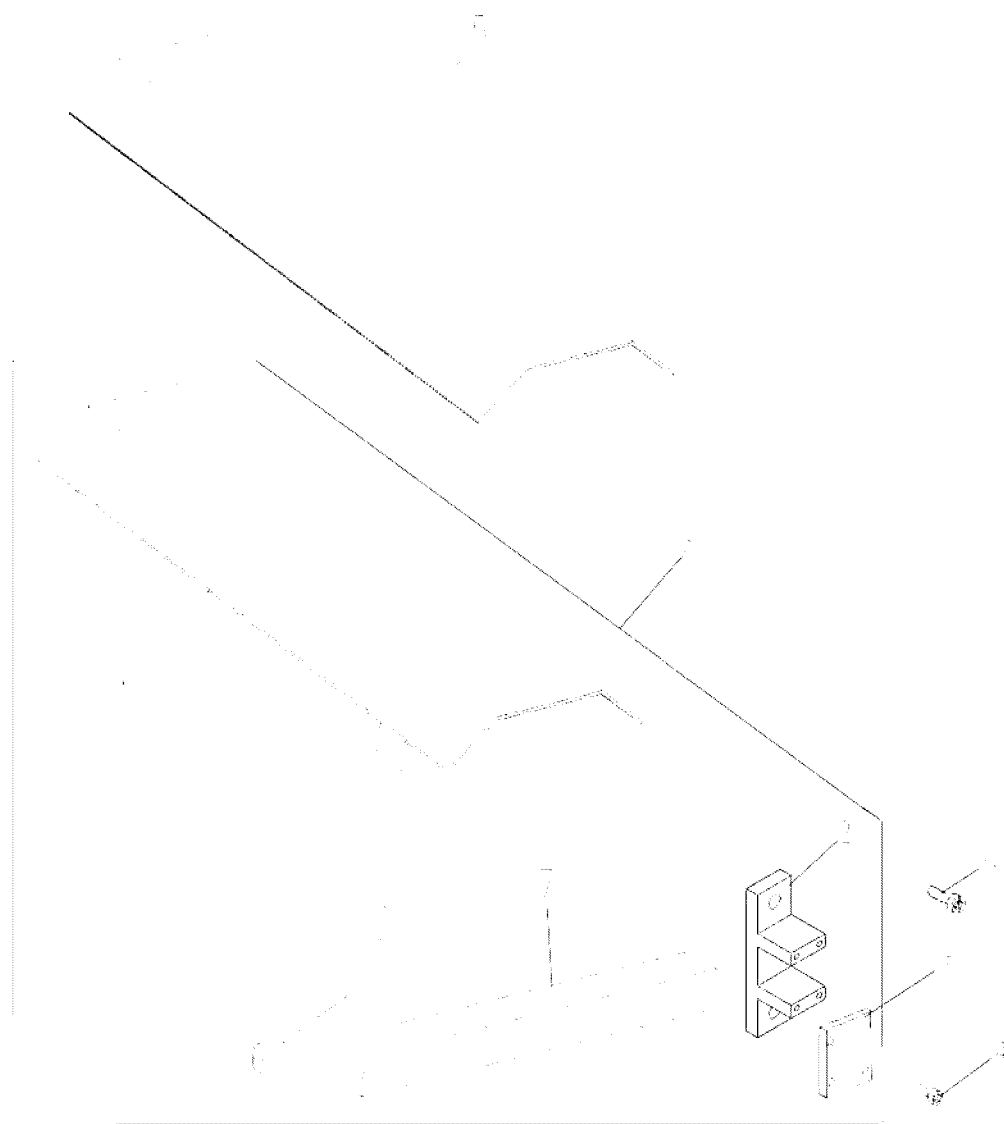
序号 NO.	件号 SAP CODE	名称	NAME OF PARTS	用量 QTY
1	61300013	电机	Motor	1
2	400901	电机连接板	Motor connection plate	1
3	S05085	内六角螺钉M6x15	Screw M6x15	4
4	40735008	T5x16同步带150cm	T5x16 belt-150cm	1.5m
6	40701011	夹具	Clamp	2
7	S05118	内六角螺钉M4x16	Screw M4x16	2
8	40735004	带轮	Pulley	1
9	40724001	轴承	Ball bearing	2
10	40726301	带轮销轴	Wheel pin	1
11	407N01004	自锁螺母M8	Nut M8	1
12	S05071	内六角螺钉M6x20	Screw M6x20	2
13	S10008	内六角紧定螺钉M4x6	Screw M4x6	2
14	W01001	垫片M4	Washer M4	2
15	4073501800	驱动带轮	Drive pulley	1



<p>十 Group10</p>	<p>辅助对布装置 ASSIST EQUIPMENT PARTS</p>	<p>全自动门襟缝纫机 AUTOMATIC PLACKET SETTING MACHINE</p>
----------------------	--	---

十、辅助对布装置/ASSIST EQUIPMENT PARTS

序号 NO.	件号 SAP CODE	名称	NAME OF PATS	用量 QTY
1	40732358	支架	Holder	1
2	40701041	夹具	Fixed plate	3
3	40730020	激光灯	Laser	3
4	S05061	内六角螺钉M4x15	Screw M4x15	3
5	S05063	内六角螺钉M4x25	Screw M4x25	3
6	407S30033	支架柄	Holder	3
7	40701126	支架	Holder	3
8	N01012	螺母M6	Nut M6	3
9	S10008	内六角紧定螺钉M4x6	Screw M4x6	6
10	4073233800	布料盒组件	Fabric box unit	1
11	400886	布料盒连接块	Fabric box unit connection plate	2
12	N01009	螺母M10	Mut M10	2
13	40732348	布料盒支撑杆	Fabric box stand bar	2
14	407S04001	十字沉头螺钉4x16	Screw M4x16	11
15	40732342	钢板二	Steel plate	1
16	S10008	内六角紧定螺钉M4x6	Screw M4x6	4
17	400885	布料盒固定块	Fabric box fixed plate	2
18	302091	机架小组件	Rock unit	1
19	S05060	内六角螺钉M8x25	Screw M10x25	3



十一  
Group 11

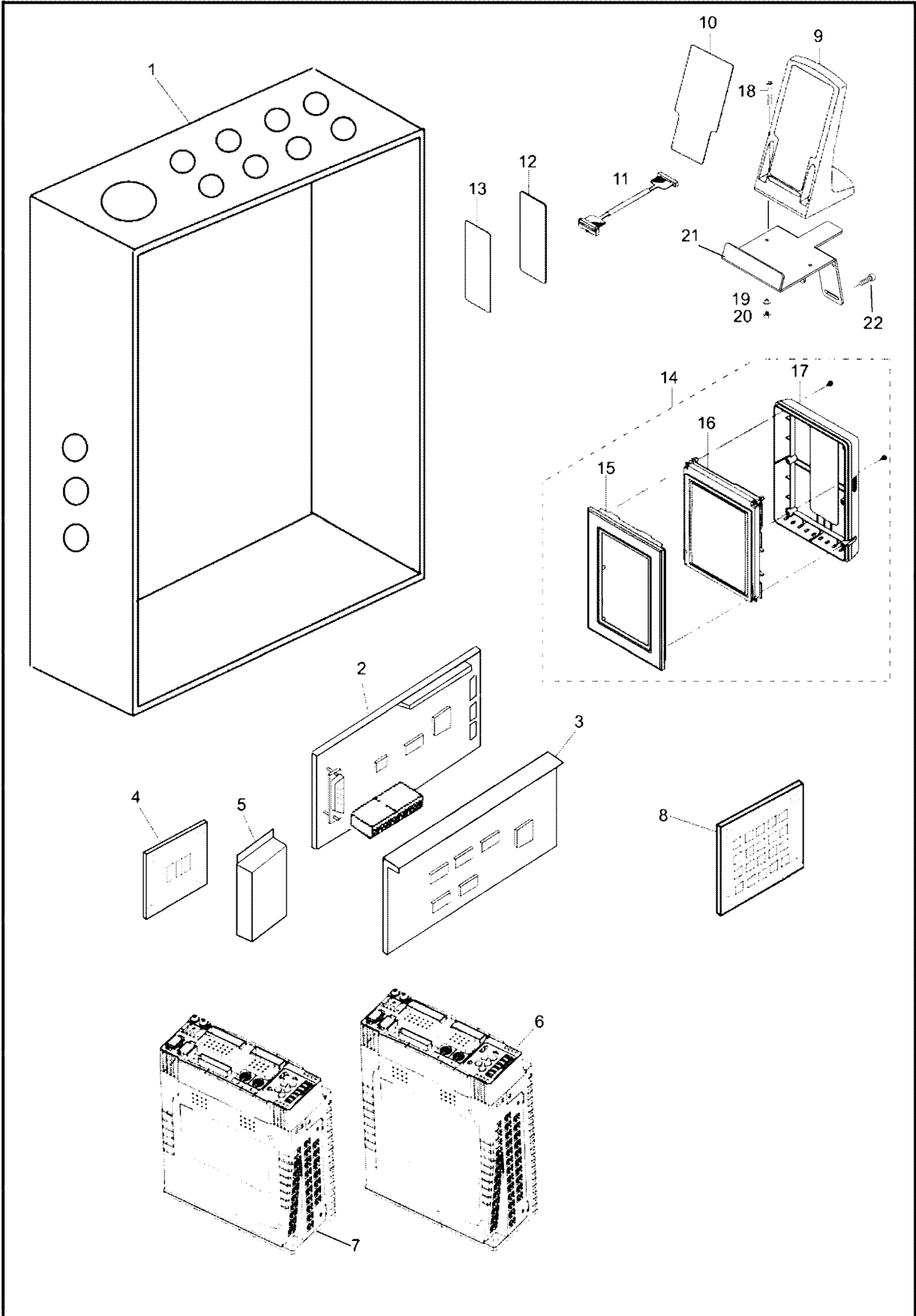
堆叠器组件  
STACKER PARTS

全自动门襟缝纫机  
AUTOMATIC PLACKET  
SETTING MACHINE



十一、堆叠器组件 / STACKER PARTS

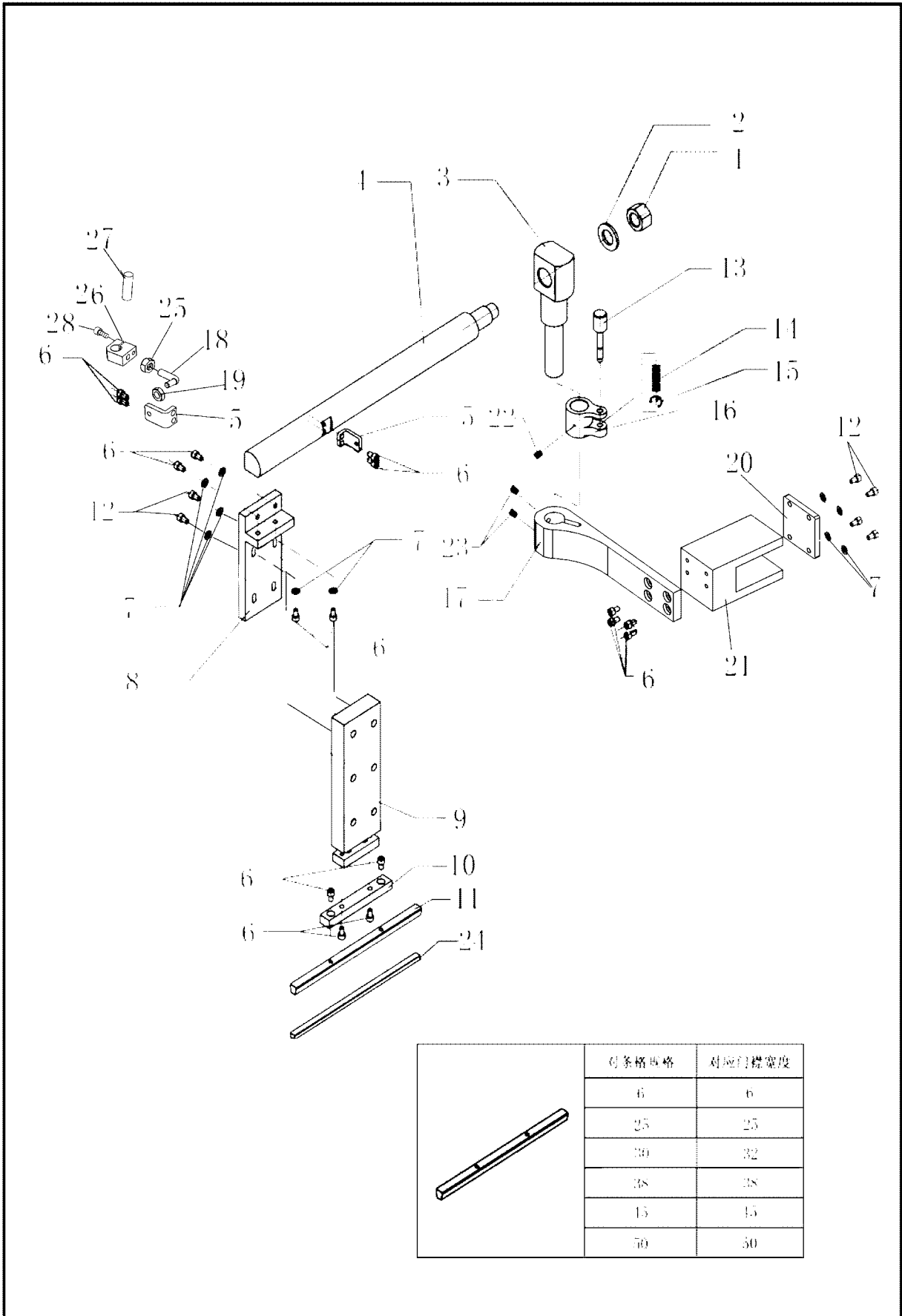
序号 NO.	件号 SAP CODE	名称	NAME OF PATS	用量 QTY
1	40701360	堆叠板	Stacker board	1
2	40712303	堆叠架连接块	Stacker trestle connection plate	1
3	40701328	堆叠架连接块盖板	Stacker trestle connection plate cover	1
4	S05034	螺钉M5x15	Screw 5x15	4
5	40722035	泡沫板	Stacker foam rubber	1
6	40701361	竖直支架	Down frame	1
7	40701362	水平支架	Level frame	1
8	4070136200	堆叠器组件	Stacker unit	1
9	S050101	螺钉M8x16	Screw8x16	2



十二 Group12	电控组件 CONTROL BOX	全自动门襟缝纫机 AUTOMATIC PLACKET SETTING MACHINE
---------------	---------------------	--

十二、电控组件 / CONTROL BOX

序号 NO.	件号 SAP CODE	名称	NAME OF PARTS	用量 QTY
1	61909001	电控箱	Electric cabinet	1
2	60900006	下位机电路板	Control board	1
3	61301014	大开关电源	Power	1
4		电源转接板	Circuit board	1
5	61301007	小开关电源	Power	1
6	40733008	750W电机驱动器	750W motor driver	1
7	40733009	400W电机驱动器	400W motor driver	1
8		输入输出端口转接板	Circuit board	1
9	42111007	操作屏座	Operation box fixed plate	1
10	42112249	吸附板	Plate	1
11		通讯连接线	Connection line	1
12	42130101	磁贴	Magnets	1
13	42112287	吸附粘板	Plate	1
14	4213008500	操作屏组件	LCD unit	1
15	42130085	操作面板	Operation panel	1
16		液晶屏	Liquid crystal display panel	1
17	42111006	操作屏后盖	Rear cover	1
18	S05064	螺钉M4X30	Screw M4X30	2
19	W01001	垫片M4	Washer M4	2
20	N01001	螺母M4	Nut M4	2
21	42112336	操作屏支撑板	Operation screen support plate	1
22	S01059	螺钉M5X13	Screw M5X14	2



十三  
Group13

对条对格部件（选购件）  
GRID&STRIP (OPTIONAL)

全自动门襟缝纫机  
AUTOMATIC PLACKET  
SETTING MACHINE

十三、对条对格部件（选购件）/ GRID&STRIP(OPTIONAL)

序号 NO.	件号 SAP CODE	名称	NAME OF PARTS	用量 QTY
1	N01003	螺母M16	Nut M16	1
2	W01014	垫片M16	Washer M16	1
3	302092	支撑杆	Holder	1
4	40702502	支杆	Holder	1
5	302096	安装架	Frame	2
6	S05067	螺钉M5x10	Screw M5x10	16
7	W01009	垫片M5	Washer M5	14
8	400907	气缸安装块	Cylinder holder	1
9	40730087	气缸	Cylinder	1
10	400908	转接块	Connect holder	1
11-1	400909	压布块6mm	Press foot 6mm	1
11-2	400910	压布块25mm	Press foot 25mm	1
11-3	400911	压布块30mm	Press foot 30mm	1
11-4	400912	压布块38mm	Press foot 38mm	1
11-5	400913	压布块45mm	Press foot 45mm	1
11-6	400914	压布块50mm	Press foot 60mm	1
12	S05124	螺钉M5x16	Screw M5x15	8
13	40702314	卡轴	Shaft	1
14	12927018	弹簧	Spring	1
15	40729001	卡簧	Circlip	1
16	302095	支撑杆套	Shaft bushing	1
17	40701503	安装座B件	Holder B	1
18	40709316	安装杆	Installation rod	1
19	N01014	螺母M5	Nut M5	1
20	40712501	盖板	Cover	1
21	40701502	安装座A件	Holder A	1
22	S10006	螺钉M5x6	Screw M5x6	1
23	S10009	螺钉M6x8	Screw M6x8	2
24	40723001	压布条	Sponge rubber	1
25	N01012	螺母 M6	Nut M6	1
26	40701126	支架	Holder	1
27	40730020	激光灯	Laser light	1
28	S05118	螺钉M4X16	Screw M4x16	1